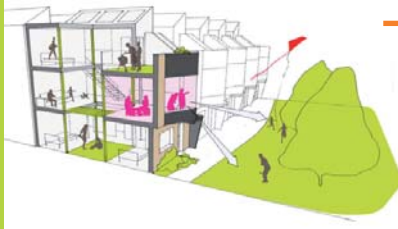


**HERTFORD AND WARE**  
 3 schemes of 3/4  
 bedroom semi-detached  
 affordable homes on infill  
 and backland sites -  
 pre-planning stage

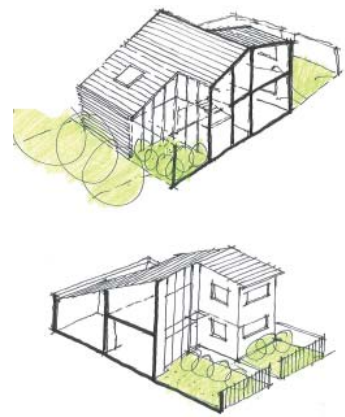
Network Housing



**'MAKE ME A HOME'**  
 Our entry reached the  
 runners-up in the North-  
 shore 'Make Me a Home'  
 international competition  
 to design an new housing  
 typology



**NEWS**  
 SPRING update  
 2 0 0 9



**TOWER HAMLETS**  
 Community / commercial  
 mixed-use development  
 including 190  
 mixed tenure homes -  
 pre-planning stage

Client: Confidential



**TYRRELL AVENUE,  
 BEXLEY**  
 Development of family  
 units for social housing -  
 submitted for planning

Private developer

**LYNTON ROAD,  
 SOUTHWARK**  
 16 unit scheme  
 including family units  
 with communal garden -  
 pre-application stage

London and Quadrant  
 Housing Trust



**KENNEDYS SAUSAGE  
 FACTORY, PECKHAM**  
 Mixed-use development  
 consisting of 55 residential  
 units and commercial space  
 - pre-application stage

Hambridge Homes

